

USA Environmental, Inc.

A Small Business providing
Munitions Response Services

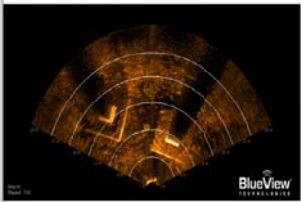


Underwater MEC Investigation Cost Saving Technologies



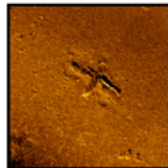
Inspection Class Remotely Operated Vehicle (ROV)

- Operational depth: range 1 to 300ft
- System contained within 2-3 Pelican cases; minimal pre-deployment lead time and cost
- Smart Tether navigation system for accurate underwater GPS location (5-ft accuracy)
- Integrated 900-kHz sonar for low visibility maneuvering
- Not restricted to any bottom time limitation; effectively operates in currents of 2 to 3 knots
- Video documentation of marine environment in proximity to encountered MEC
- Real-time video of underwater operations
- Access to very shallow waters and the ability to safely maneuver around corals



Other Underwater Survey and Investigation Systems

- Towed Camera
- Side Scan Sonar
- Magnetometers
- Electromagnetic (EM)
- Single/multi-beam bathymetry
- Working Class ROVs

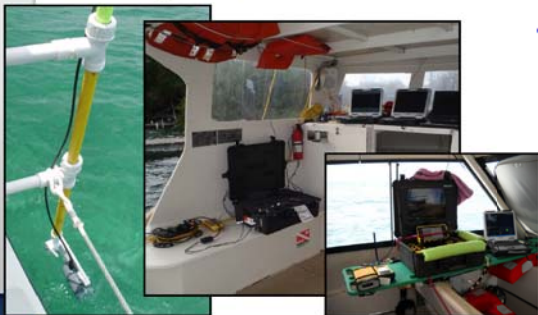


Images from surveys performed by USA



Technology Advantages

- Cost Effective
- Wide Area Assessment
- Ability for stakeholders to view and gain perspective of underwater sites/conditions
- Real time observations for Quality Control
- Enhanced safety of personnel
- Protection of sensitive marine habitat



www.usatampa.com

Underwater MEC Investigation and Response Tools



Underwater Services

- MEC detection, identification, and characterization
- Removal Actions
- Coral surveys
- Structural investigations
- Marine habitat assessments
- Rapid responses



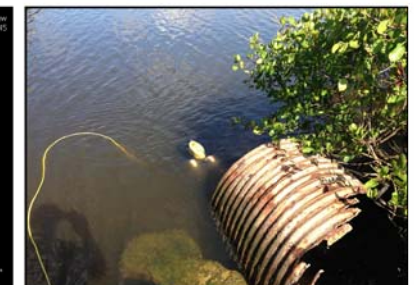
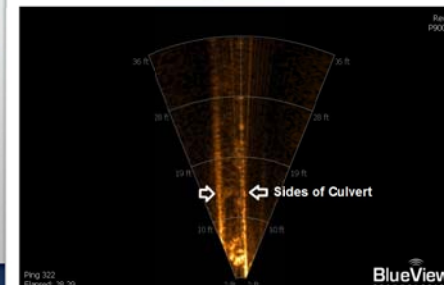
Extensive Capabilities and Experience

- Trained MEC dive teams
- Inspection and Working Class ROVs
- Towed sensor arrays (Side scan sonar, magnetometer, EM, etc.)
- Wide range of experienced corporate team members
- Ability to operate in remote/challenging locations
- Cost effective



Critical Elements and Understanding

- Dynamic marine environments
- Consideration and planning for sensitive marine habitat/angered species
- Safely operate in higher risk environments



www.usatampa.com